



Corporate Profile

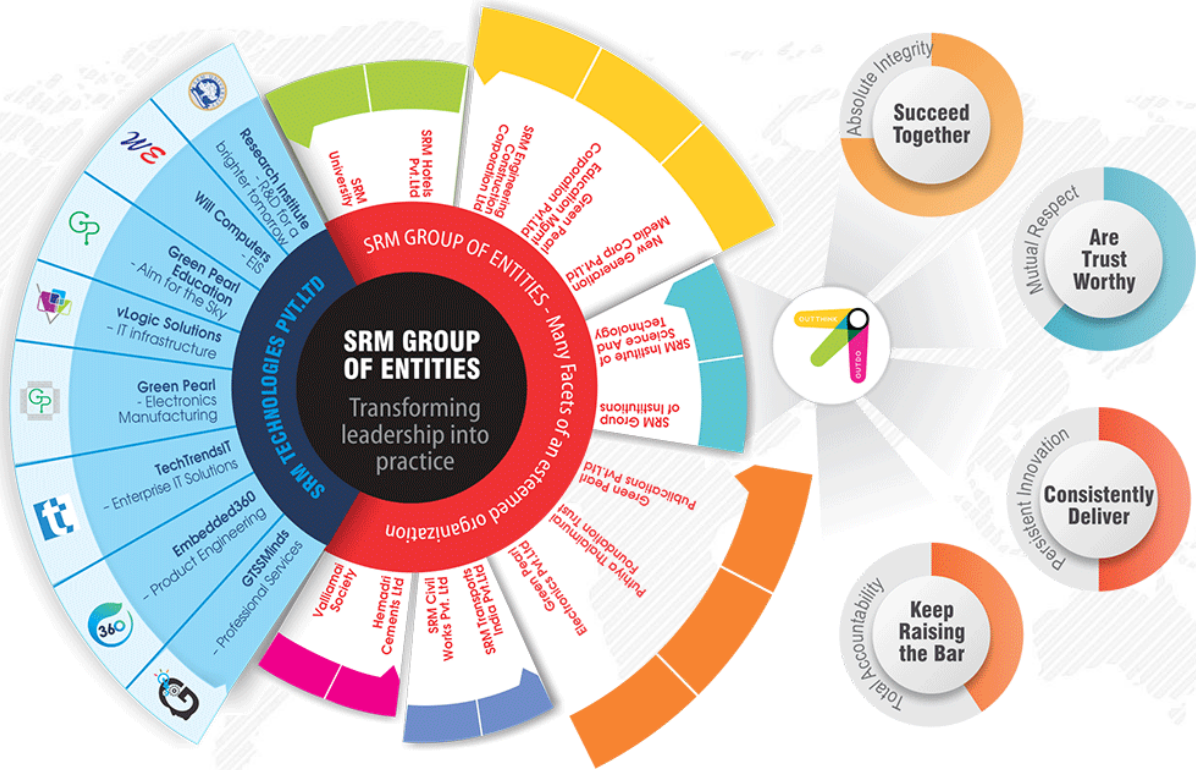
Copyright © 2017 SRM Technologies Pvt Ltd



ISO 9001:2008 ISO TS16949:2009

INDIA | JAPAN | USA | MIDDLE EAST | AFRICA | EUROPE

The Brand, Our Group



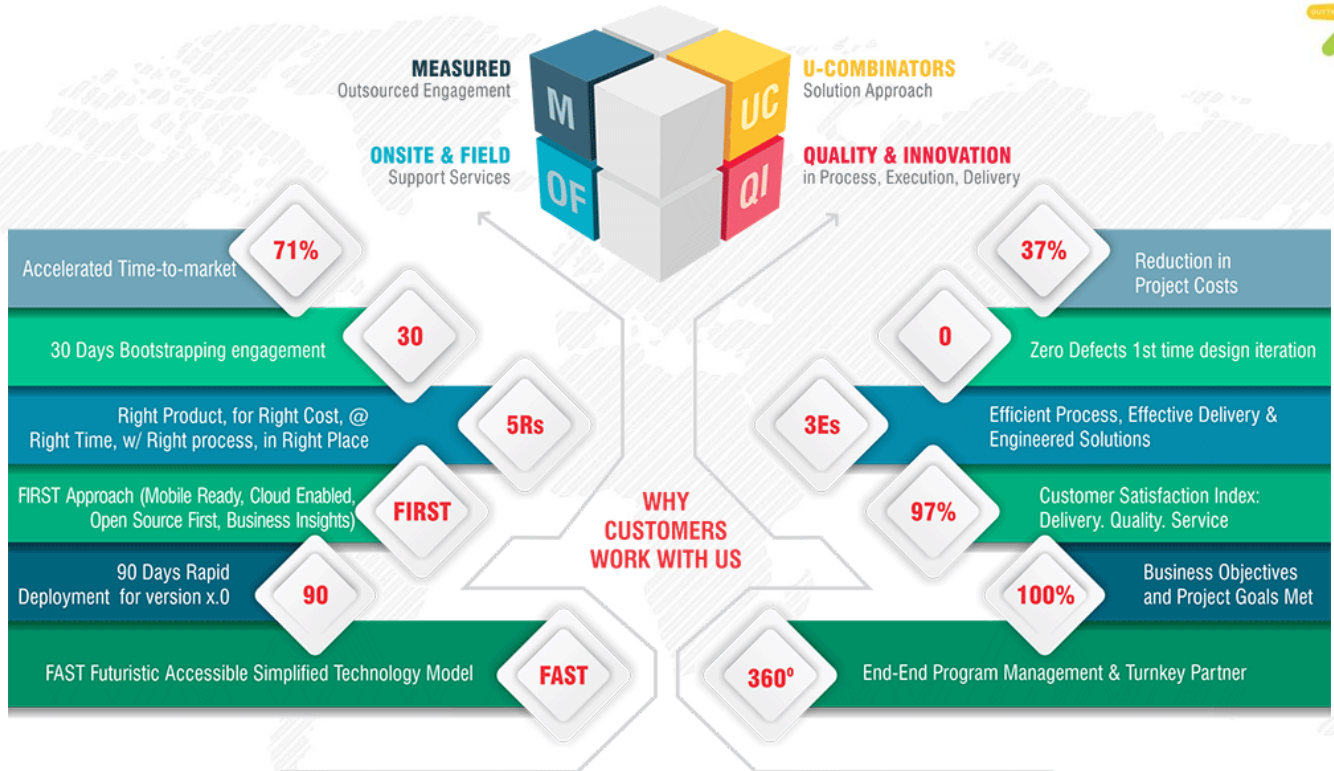
Moving Business Forward



Top 10 Challenges We Solve for You



Why Customers Work With Us

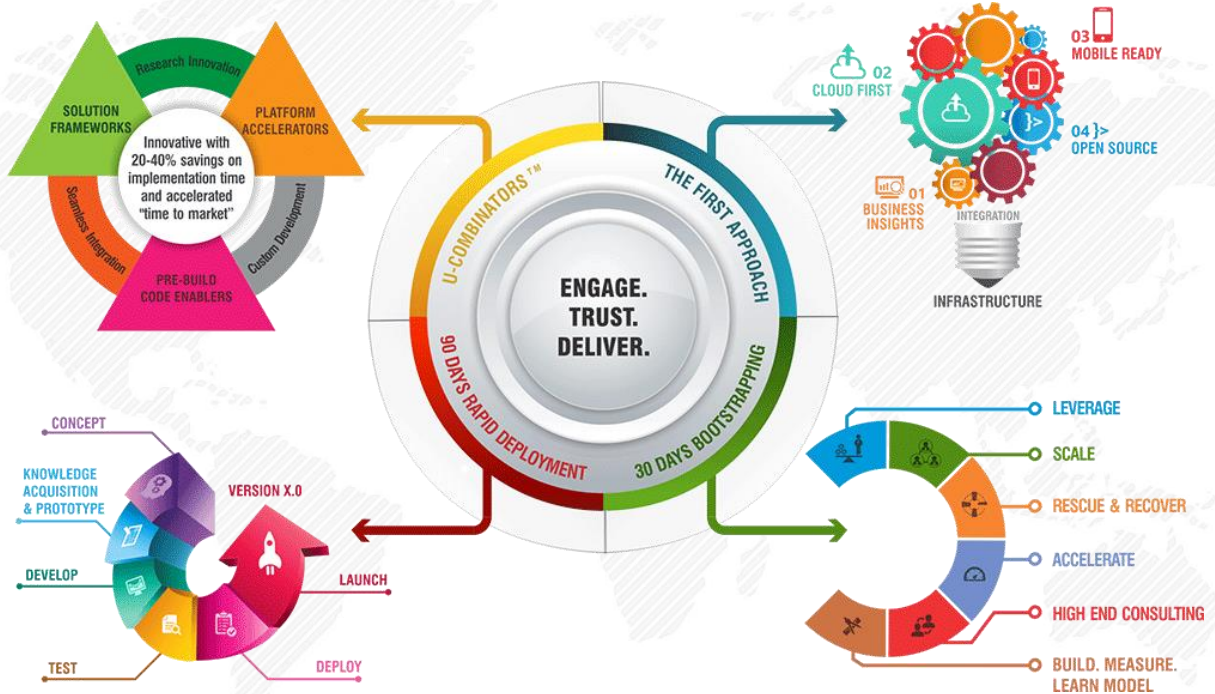


Key Differentiators



Multi-lingual Capability | Flexible Customized Solution vs Standard Product | Experienced in multiple industries verticals | Accountable for the deliverables | Dedicated Support Services | Quality Oriented | Comparatively low cost | Values Customer Relationships

SRM Unique Approach



Platforms & Solutions

PLATFORMS & ACCELERATORS

ATIHA: Online Learning Platform	CATALIST: Precision Tracking IoT Platform	GLUE: Enterprise Application Integration Platform	IoT Toolkits/ Platforms	Enterprise Mobility Accelerator	Advanced Analytics Platform & Visualization	Open Web Collaborative Rapid Deployment Framework
<ul style="list-style-type: none">✓ Triggering goal-based study✓ Regular online assessments✓ Makes learners industry-ready✓ Unique process of introspective learning✓ Periodic mentoring✓ Holistic learning	<ul style="list-style-type: none">✓ Personalized and enhanced experiences for consumers✓ Real time support for assisting and aiding decision making✓ Multi-modality-supporting any and every kind of sensing technology✓ Enables a secured, energy aware and smarter place✓ Precision and continuous tracking✓ Deliver just-in-time information✓ Mobility prediction	<ul style="list-style-type: none">✓ Process Designer✓ Web application studio & designer✓ Runtime process engine✓ Rules engine✓ Integrated business activity monitoring✓ Cache Routing✓ Manage. Monitor. Control	<ul style="list-style-type: none">✓ Connected App with RAD on Arduino, Raspberry PI and hardware devices✓ Connect. Collaborate. Communicate: Platform with IoT Access, IoT Core and IoT Meta Layers✓ Home Automation Solutions✓ School Students Tracking Solutions✓ Attendance Tracking Solutions✓ Senior Safety Monitoring Solutions✓ Energy Harvesting wireless solutions	<ul style="list-style-type: none">✓ Enterprise Backend server which seamless integrates with your existing database & application systems✓ Cross platform SDKs(android, iPhone, HTML5)✓ User interface kits which includes toolbars, buttons, images and icons✓ Customize using web based designer and native IDEs✓ Reusable business objects mapped to controllers & data sources✓ Pre built view templates for mobile layouts✓ Generating packages for cloud deployment	<ul style="list-style-type: none">✓ R based analytic engine✓ Supporting integration with multiple web services, json etc.✓ R based platform runs on a cloud/ big data cluster✓ Hadoop/batch integration✓ Specialized graphs and charts✓ Visualization processing at the algorithmic level✓ Customization of graphs using a graphical flow✓ Simulations for more power & flexibility	<ul style="list-style-type: none">✓ 360° Dashboards✓ Collaboration✓ Internal & External Portals✓ Interactive Data Analysis✓ Enterprise Search✓ Social Integration✓ Seamless administration✓ Native Mobile Access



Enterprise Application Services



Application Portfolio Management

- ✔ **Application inventory:** Inventory of applications across the organization
- ✔ **Risk landscape assessment:** Review and assessment of risks that threaten sustainability of the application portfolio
- ✔ **Application metrics development:** Determines which metrics are relevant and easy to collect



OUR EXPERTISE

- ✔ **Application portfolio assessment:** Comprehensive assessment of the application portfolio
- ✔ **Application rationalization:** Focuses on reducing the overall application footprint and operating costs
- ✔ **Application transformation roadmap:** A roadmap for transforming the application portfolio
- ✔ **Application portfolio management office:** To provide ongoing governance and project management



OUR METHODOLOGY



- ✔ Plan
- ✔ Measure
- ✔ Analyze
- ✔ Transform
- ✔ Communicate

- ✔ Scalability
- ✔ Flexibility & Adaptability
- ✔ Transparency
- ✔ Simplicity

OUR FRAMEWORK



Application Modernization Services



OUR ROADMAP

- ✔ Vision
- ✔ Current State
- ✔ Desired Future State
- ✔ RoadMap
- ✔ Solution options

APPROACHES

- ✔ Re-hosting and encapsulation of core applications
- ✔ Conversion of core applications
- ✔ Rewriting core and supporting applications
- ✔ Replacing core and supporting applications

SERVICES

- ✔ Platform Modernization
- ✔ Database Modernization
- ✔ Transition to Cloud
- ✔ Legacy Conversion
- ✔ Code refactoring
- ✔ Web & Mobile Enablement
- ✔ UX/Data Visualization
- ✔ Digital Transformation

OUR EXPERTISE

- ✔ Innovative technological approach to modernization supported by a set of proven tools for the complete analysis of mainframe environments
- ✔ Established partnerships with all major modernization vendors (while maintaining vendor independence)
- ✔ Modernization strategy designed to minimize risks
- ✔ Industrialized practices and processes
- ✔ Structured knowledge management framework to facilitate knowledge capturing, maintenance and sharing, as well as team collaboration
- ✔ Modernization center of excellence, providing capabilities and services that cover all aspects of modernization
- ✔ Global delivery and governance Custom Application Development

Make Application Digital



OUR EXPERTISE

- Rich, cross-browser interfaces
- Latest HTML5 technologies and supporting frameworks
- UIs that are modular, extensible and maintainable
- Single page apps as well as more complex UIs with multiple modules
- Dynamic screens with live charts, graphs, and tables
- Porting from old-school, static page apps to dynamic experiences with JavaScript and Ajax
- Develop a custom UI / UX framework to accelerate your teams productivity, utilizing efficiency-enhancing packages and frameworks
- Advise your team on patterns, practices, and policies for effective UI/UX development

METRICS DRIVEN APPROACH

- Usability
- Engagement
- Conversion



OUR DESIGN PRINCIPLES

- Role Based
- Responsive
- Simple
- Coherent
- Delightful

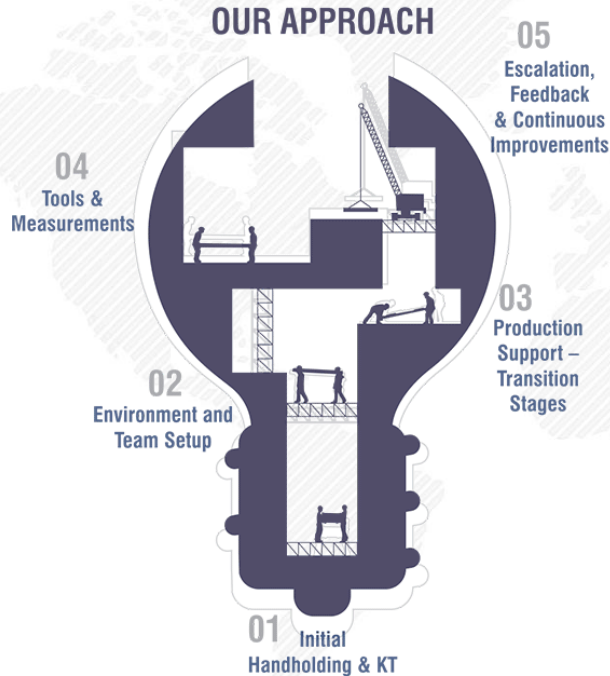
Custom Application Development



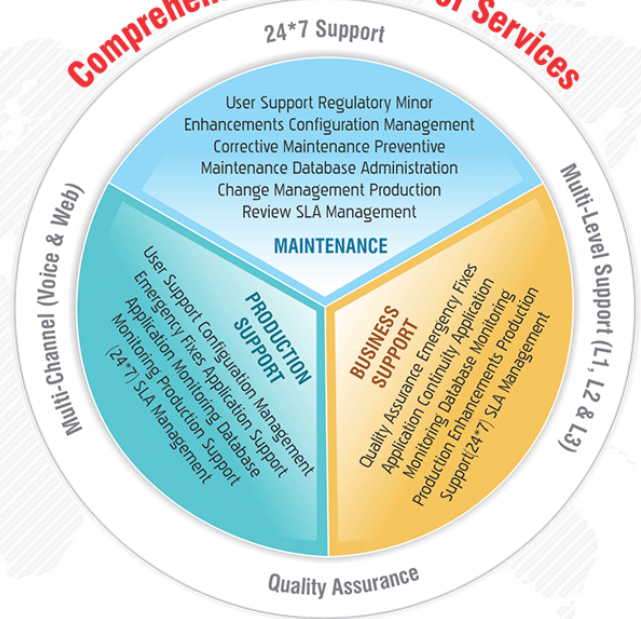
OUR SERVICES SPAN ACROSS

- ✓ ISV Competency
- ✓ Web Development
- ✓ Web Portals & Collaboration Sites
- ✓ 3rd Party Software Integration
- ✓ Product Development
- ✓ Application Development
- ✓ Desktop Applications
- ✓ Mobile & Tablet Applications
- ✓ Content Management Systems
- ✓ Platform Development

Application Support & Maintenance



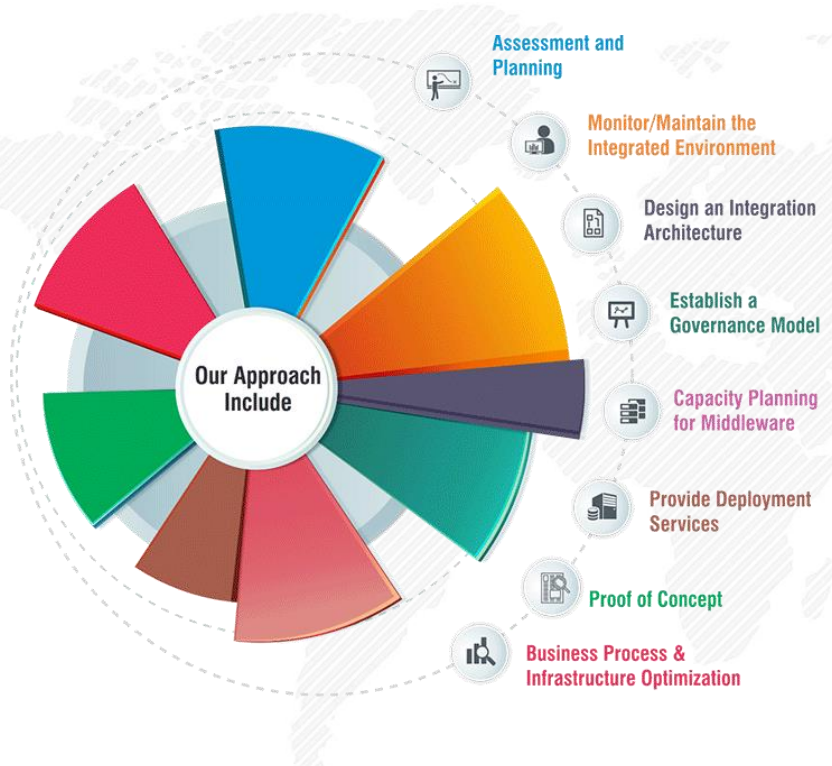
Comprehensive Spectrum of Services



Application Migration & Upgrade Services



Application Integration Services



KNOWLEDGE OF LEADING VENDORS



COGNOS
Better Decisions Every Day™

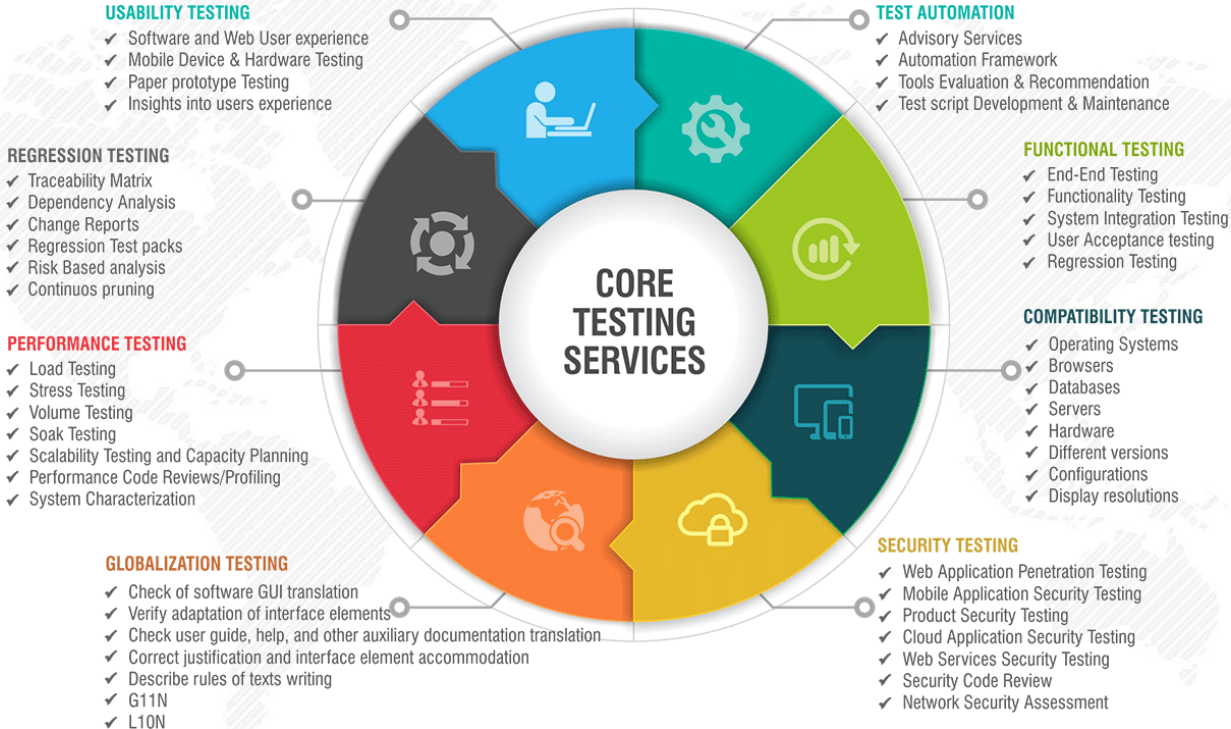
SAP
Business Objects

TIBCO

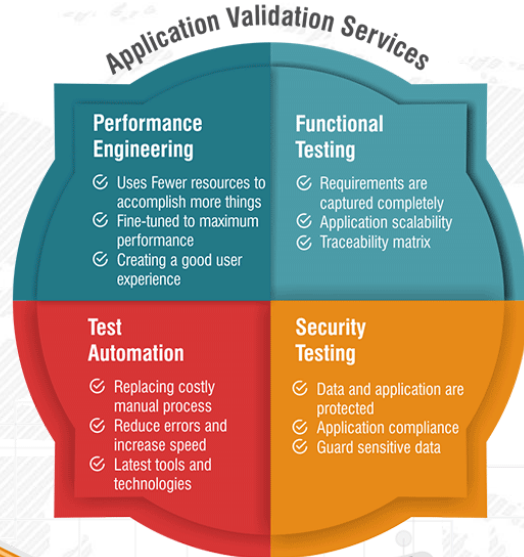
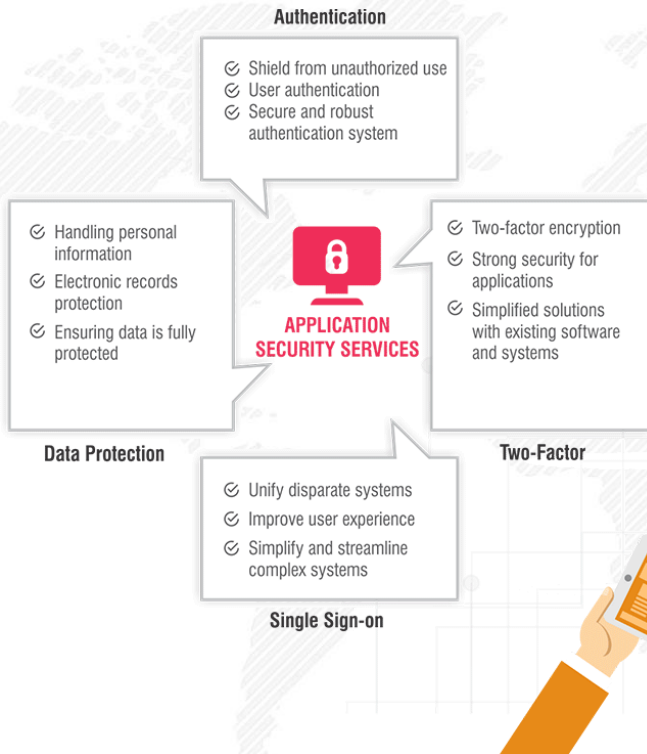
VITREA
ERIKOISLABIT



Application Testing Services



Application Validation & Security



Domains We Serve

RETAIL



- Personalized Shopping Experience
- Just in time promotions
- Real Time Insights to drive user behavior
- IoT adoption with wearables, beacons, sensors
- Consumer precision Tracking
- Social media Platform integration for B2C
- Omnichannel & E-commerce (B2B & B2C)
- Mobile experience in shopping journey

EDUCATION



- Online Learning Platform
- Digitizing content – course material and textbooks
- Enhanced Cloud Enabled Classroom
- Connected classrooms & Students
- Student Tracking & Virtual Mentor
- BYOD
- Teachers, Students, Parents Social collaboration
- Integration of free online course material to classroom

AUTOMOTIVE



- Technology enabler to bring your viable ideas quickly.
- In-vehicle telematics
- Vehicle-vehicle communication
- Consumer Insights
- Dealer-Customer Engagement solutions
- Global Integration, Collaboration and Partnerships
- Connected vehicle
- Digital Automotive Experience

DIGITAL AGENCIES



- Collaboration
- Digital Marketing
- CMS, ECM & Portals
- Cloud and mobile solutions
- E-commerce
- User experience design and engagement
- BI & Analytics with Insights
- Social Media Integration.

HEALTH CARE



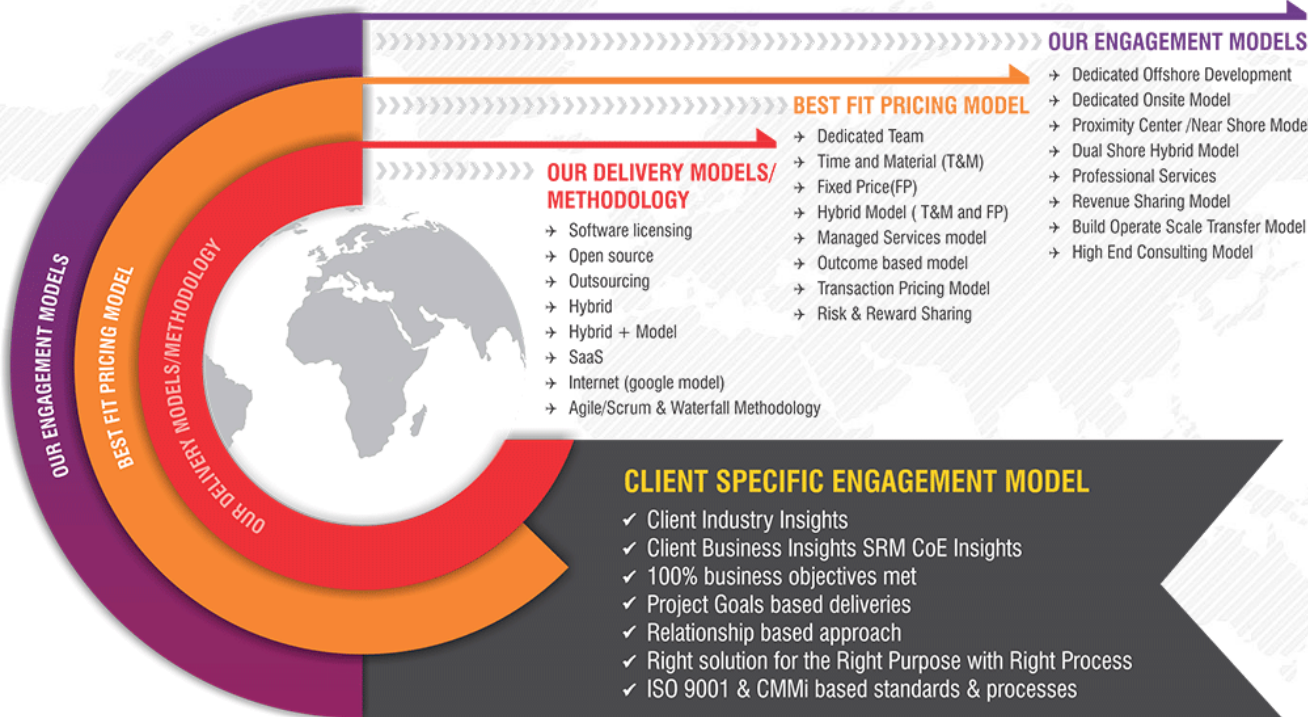
- Innovative ways of using RFID tags for drug safety
- Business Intelligence and Claims analytics
- Analytics and clinical decision support system
- ICD-10-CM Conversion
- Creating healthcare market place.(Portal)
- Developing hybrid clouds
- EMR/EHR implementation
- Healthcare Mobility

ISVs



- Dedicated BOT Centers of Excellence focused on key technology stacks
- Software product development services in offshore, onsite and hybrid models
- Enhance product portfolio to Cloud and Mobile platforms
- Engineer, Re-engineer products
- Consulting and architecture support
- Platform development & enhancement services
- Testing, integration, migration implementation services
- R&D services

Engagement & Delivery Models



Major Customers

THANK YOU

SRM
TECHNOLOGIES



ENGINEERING | EMBEDDED | APPLICATIONS | INFRASTRUCTURE | CONSULTING

INDIA | JAPAN | USA | MIDDLE EAST | AFRICA | EUROPE

www.srmtech.com